



2025 Annual Report

a COMMUNITY in CONVE RSATI ON.

A LETTER FROM OUR FOUNDER

NICIA JOHN

DEAR MEMBERS AND FRIENDS OF THE CREATE FOUNDATION,

In January of 2025, I sat at my desk with a typed-out vision for the year, but no team. I remember staring at the freshly updated site, excited for all that was possible, but genuinely unsure how I could get there. I sat there and prayed, asking God to send me the people to make this vision come true.

By March of 2025, we assembled our first board of directors at an in-person café meeting in Montreal. What began as a moment of hope quickly became a foundation. Three months later, we recruited content volunteers, assistants for The CreMAP Directory, and a collaborator to deliver Art-Sci Currents—projects that extended our mission into the worlds of interdisciplinary researchers across art, science, and technology around the globe.

In over 300 volunteer hours, we:

- Reached nearly 100 members of The CreMAP Directory across 20 countries
- Interviewed 12 art-scientists in 8 countries, sharing their stories of integration
- Held over 30 hours of one-to-one conversations with international art-scientists and thinkers
- Redesigned our platform to improve efficiency and accessibility
- Attended the Bridges Math Conference
- Achieved a reach of over 50,000 across our content platforms

But beyond the numbers, this past year was about connection, conversation, and community. An idea that began as a written vision from one person became a shared movement carried by many.



The rapid acceleration of our growth validates our observation that the desire for art-science communities to have access to meaningful support is real, and it is urgent. In this growth, we came to understand that the challenge is not simply that art-science is unfamiliar, but it is that the field lacks a structured and credible support system to lean on. Interest is high—higher than ever in recent years—yet, there remains a gap in funding, infrastructure, opportunity and clear pathways forward.

As a nonprofit, The Create Foundation is committed to building that ecosystem one step at a time. Our programming, content and platforms this past year have served as proof of concept — we built a community.

We are listening closely. And we now know that this work matters. Art-science takes many shapes, many forms, many names. But underneath it all, there is a shared drive to integrate high-level skills, to discover, transform and reinterpret knowledge is heard loud and clear.

Today, people who want to explore beyond traditional boundaries are choosing communities like ours as vehicles for doing so. There is no longer a divide between art and science, between creativity and analysis, between expression and discovery. Thank you for being part of this vision, and for helping shape what comes next.

2025 IN REVIEW

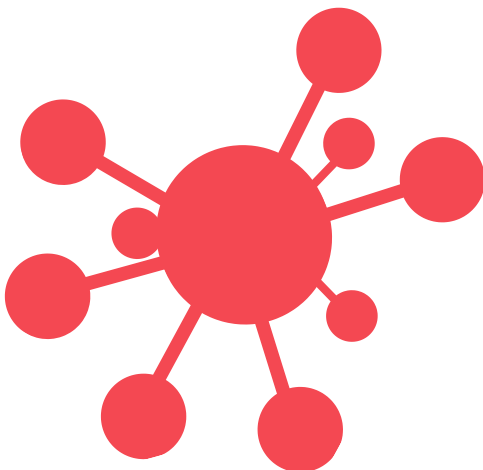
In 2025, The Create Foundation for Art-Science Innovation experienced significant growth as it strengthened its role in the global art-science ecosystem. What began as a vision led by one founder evolved into a collaborative movement supported by a growing board, volunteers and contributors across multiple countries. Throughout the year, the Foundation

expanded The CreMAP Directory to nearly 100 members across more than 20 countries, conducted over 30 hours of one-to-one conversations with art-scientists and launched initiatives such as Art-Sci Currents and the Art-Science Store. We were in attendance at the Bridges Math Art Conference, Eindhoven, the Netherlands, helping deepen international connections and visibility. Social media storytelling reached more than 50,000 accounts by Q4, while over 1,000 volunteer hours supported operations, programming and community-building efforts. Through listening, collaboration and strategic development, 2025 established a strong foundation for long-term impact, credibility and growth within interdisciplinary art-science innovation.

OUR APPROACH: CONNECTING, CREATING, CONVERSING

Community does not emerge by accident. It is built through consistent participation, shared spaces, and the willingness to show up—not just as an organization, but as an active member within a growing field.

At the Create Foundation for Art-Science Innovation, our work in 2025 was guided by a simple but deliberate approach: connect people, create opportunities, foster conversations, and let community grow from there.



In 2025, creating was about driving visibility and sparking interest. We focused on producing content that people could see themselves in: stories, highlights, and shared moments that reflected the diversity of art-science practices. Across social media and digital platforms, this content acted as an entry point, inviting people into the space without barriers.

The launch of the Art-Science Wall Calendar further reinforced this approach. Designed as a collaborative publication, the calendar invited members to contribute their work, transforming individual practices into a shared project by the community. The wall calendar also marked the launch of The Art-Science Store, a dedicated space for distributing tools, books, resources and merchandise connected to both the nonprofit and the broader advancement of art-science.

THE ART-SCIENCE STORE

WWW.CREATE.CA/STORE

Conversations are where connection become meaningful. Through the Art-Sci Currents interview series, we documented the journeys of individuals working at the intersection of art and science. These stories highlighted a wide range of practices and perspectives by creating a space for listening. These conversations informed our broader understanding of the field we are helping to shape.



WWW.CREATE.CA/ARTSCICURRENTS



Community emerges through participation.

Over the course of 2025, we observed an evident shift: increased engagement, clear responsiveness and a growing willingness among members to build an art-science future.

STORIES AS INFRASTRUCTURE: LISTENING AT SCALE

In a field as interdisciplinary as art-science, growth depends on understanding the people within it. In 2025, we approached this by prioritizing and treating conversations, exchanges, and shared experiences as a form of infrastructure.

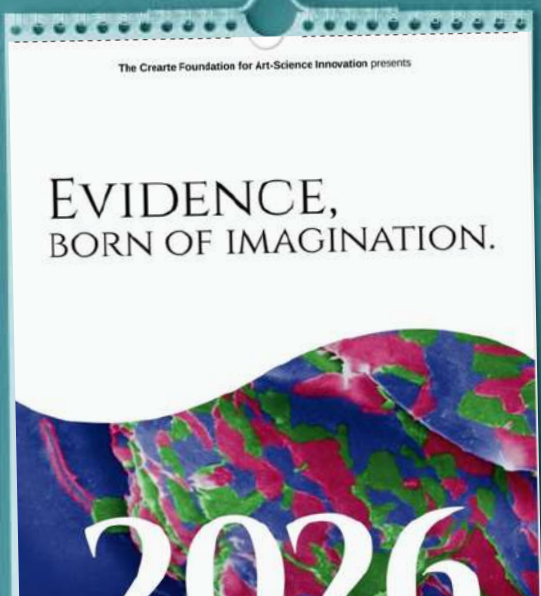
Our work was shaped through one-to-one conversations with members, informal introductions across the network and ongoing dialogue within our online spaces. These interactions created a continuous feedback loop, allowing us to better understand the needs, challenges, and ambitions of those working across art and science.

This process extended into in-person environments. Attending gatherings such as the Bridges Math Art Conference in Eindhoven, the Netherlands, provided an opportunity to connect with practitioners directly, observe how the field presents itself publicly and identify where our work can offer support and alignment.

Across these contexts, we began to see patterns emerge. There is a strong desire for connection, increased visibility and clearer pathways for collaboration. At the same time, many individuals are navigating the challenges of working between disciplines without established structures to support them.

By listening actively and consistently, we established a grounded understanding of the community we serve. These insights are not abstract. They inform how we design programs, build platforms and create opportunities for engagement.

In 2025, listening became a framework for growth, ensuring that as we expand, we do so in alignment with the people and practices at the core of the art-science ecosystem.



WE ATTAINED A SOCIAL MEDIA REACH OF

50,000

ACCOUNTS BY Q4 THROUGH ENGAGED STORYTELLING



The
creMAP
Directory
of Innovators and Art-Scientists

In one
year, we
grew:

100
members

70+
specialities

24+
countries

A GLOBAL OUTLOOK

From the outset, our work has been shaped by a global perspective. The art-science field is not confined by geography, discipline or career stage; neither is our community.

We prioritize diversity in all its forms: culture, ideas, and lived experience. This diversity strengthens the network, creating a space where different approaches to art and science can coexist, challenge one another and evolve.

Our core is integration. The CreMAP Directory of Innovators and

Art-Scientists, a global platform spanning members across multiple career stages and interests, individuals share their work, connect across disciplines and access the support needed to advance their art-science projects.

We believe that visibility leads to opportunity and that connection can develop into meaningful collaboration. We enable these exchanges by grounding our work in the resources and infrastructure available within Canada, extending them through an international lens that reflects the global nature of art-science itself: diverse, interconnected, adaptive and continuously expanding.

WWW.CREATE.CA/CREMAP



INTERNAL EXPANSION: FROM 1 TO 9

The Create Foundation for Art-Science Innovation began in March 2024 with our founder managing every aspect of the organization. By the end of 2025, it had grown into a team of 9 contributors through volunteer engagement and collaborative participation.

This shift marks more than growth in numbers, it reflects the gradual formation of an organizational structure capable of sustaining ongoing work across programs, community engagement and platform development.

We invested time in improving how progress is tracked, reported and planned. The introduction of internal reports and goal-setting frameworks helped align day-to-day activities with longer-term objectives, ensuring that individual efforts contributed to a shared direction.

4 New Board Members

5 Volunteer Contributors

1000+ Tracked Volunteer Hours

35+ Virtual Discussions & Introductions

CHALLENGES & STRATEGIC SHIFTS

In the early stages of a nonprofit, challenges are inevitable. In 2025, this was reflected in both operational and external dimensions of the organization's work, as a lack of technical infrastructure created bottlenecks during platform expansion, underscoring the need for more integrated systems and standardized internal processes to support sustainable growth.

At the same time, funding efforts highlighted broader structural limitations within the art-science space, where hybrid initiatives often fall between established "art" and "science" categories in traditional evaluation frameworks.

This experience reinforced a central insight: credibility in the art-science ecosystem is still actively being defined. It is built not only through outcomes, but through clarity of process.

For 2026, we will continue to translate these foundations into a scalable framework that strengthens both organizational capacity and long-term credibility.

5 PILLARS FOR LONG-TERM IMPACT

Through sustained engagement, listening and observation throughout the year, we identified key areas that will most effectively support the growth of an art-science ecosystem. These insights have been organized into five core pillars that now structure our work and guide our long-term development. Together, they provide a framework for coherence, ensuring that programs, platforms and partnerships evolve with intentionality and direction.

1. Education & Discovery

Supporting learning, exposure and exploration across art-science disciplines, helping individuals understand and engage with the field.

2. Community Building

Strengthening The CreMAP Directory network and fostering meaningful connections among innovators, art-scientists and collaborators globally.

3. Research & Credibility

Developing documentation, storytelling and structured outputs that contribute to the legitimacy and recognition of art-science practice.

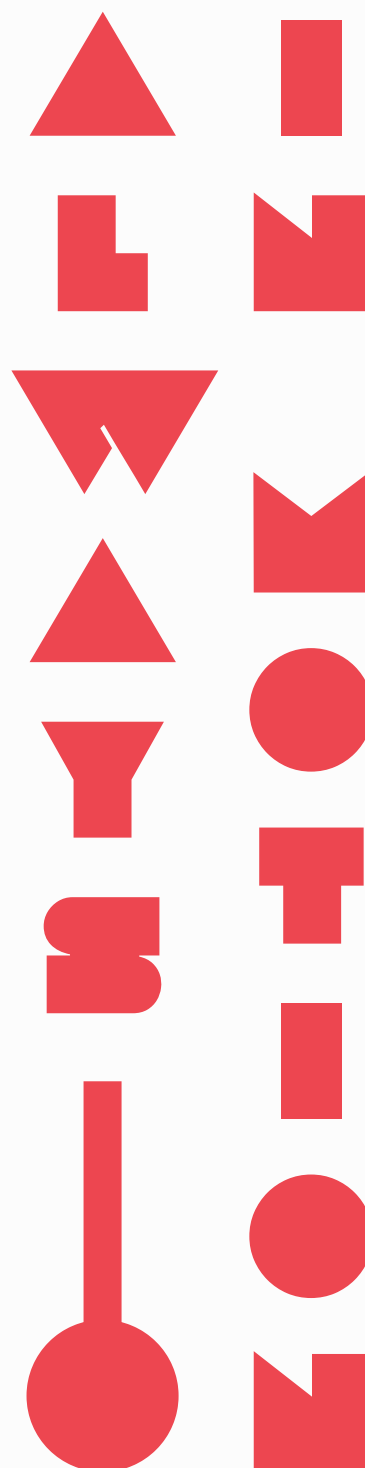
4. Practical Development

Building tools, platforms, and resources that directly support the creation, collaboration and advancement of projects.

5. Strategic Impact

Guiding partnerships, long-term initiatives and systems that expand the reach and sustainability of the organization's mission.

We are Always in MOTION: building, learning and adapting with the art-science community we serve. We conclude 2025 on a strong and meaningful note, with clear momentum and direction. This is work built to last, and we are here to see it through!



BOARD MEMBERS

Nicia John

Founder, Chair, President & Executive Director
Montréal, QC

Olabisi Olawole

Secretary
Montréal, QC

Zoe Venema

Treasurer
Albi, France

Jimena Musalem Lopez

Director of Funding
Montréal, QC

VOLUNTEERS

Ava Williams

Editorial Researcher
Montréal, QC

Alexandra Harrison

Communications Assistant
The CreMAP Directory
Montréal, QC

Brune Bettler

Videographer & Editor
Art-Sci Currents Interviews
Montréal, QC

Célia Sciandra

Events & Partnerships Coordinator
Montréal, QC

Leïla Flaviano

Students Outreach
Montréal, QC

CONTRIBUTORS

Ben Thomas

"Between Knowing and Feeling"
Art-Sci Currents Interviewee
Montréal, QC

Brigitte Kock

"Additive by Design"
Art-Sci Currents Interviewee
London, England

Dr. Eva Sanchez Martz

"In-Between Frontiers"
Art-Sci Currents Interviewee
Madrid, Spain

Dr. Robert Zatorre

"Resonant Curiosity"
Art-Sci Currents Interviewee
Montréal, QC

Eden Redman

"Complexity and Chaos"
Art-Sci Currents Interviewee
Montréal, QC

Linnea Kirby

"Making the Hidden Visible"
Art-Sci Currents Interviewee
Montréal, QC

Matias Garate

"The Intuition of Logic"
Art-Sci Currents Interviews
Luxembourg

Peter Ayres

"The Architecture of Choice"
Art-Sci Currents Interviewee
London, England

Sofia Papa

"Multiple Ways of Knowing"
Art-Sci Currents Interviewee
Italy

Vena Joseph

"Knowledge Translation",
Art-Sci Currents Interviews
Montréal, QC

2025 FINANCIALS

The Create Foundation has continued to grow through a strong commitment of in-kind contributions, including management support and volunteer hours, which have been generously provided by our team and wider community. These non-cash contributions reflect the depth of engagement in our

mission and have been instrumental in enabling our operations and programming without the need for external funding. In addition, the Foundation has been supported through a capital loan from the founder, which has allowed us to cover initial setup and operational costs while maintaining full continuity of activities. Together, these contributions demonstrate the resilience of our model and our ability to advance our work efficiently and sustainably with minimal external financial support.

STATEMENT OF ACTIVITIES

Year Ended February 28, 2026

Revenue and Support

Capital Loan	\$1,378.69
Product Sales	\$181.46
In-Kind Labour	\$63,600.00
Total Revenue & Support	\$65,160.15

Expenses

Management	\$54,600.00
Legal	\$12.00
Programs	\$6,100.00
Operations	\$1,184.20
Total Expenses	\$64,796.20

Excess Revenue Over Expenses **\$363.95**

Change in Net Assets	-\$2073.82)
Net Assets - Beginning of Year	-\$1,059.08)
Net Assets - End of Year	-\$2,073.820

STATEMENT OF FINANCIAL POSITION

Year Ended February 28, 2026

Current Assets

Cash and Cash equivalents	\$137.38
Other Current Assets	\$0.00
Total Assets	\$137.38

Non-Current Assets

Investments	\$0.00
Property & Equipment	\$0.00
Total Non-Current Assets	\$0.00

Total Assets **\$137.38**

Current Liabilities

Accounts Payable	\$1378.69
Short-term Loans/Credit	\$0.00
Total Liabilities	\$1378.69

Non-Current Liabilities

Loans Payable	\$1,059.08
Other Loans payable	\$0.00
Total Non-Current Liabilities	\$1,059.08

Total Liabilities **\$2437.77**



Stay Connected



365 Rue Ste. Catherine E., Unit #302
 Montréal, QC
 H2X 3X2
 Canada

info@create.ca
 www.create.ca



@create.ca



@create.ca



@TheCreateFoundation



@TheCreateFoundation



@TheCreateFoundation